

LEARN ABOUT NATURE, HUMANS AND TECHNOLOGY

through multimedia
and interactive
displays



open daily from 10-18 h
www.inatura.at





The museum you can touch

Nature, humans and technology. inatura museum in Dornbirn offers something for everyone, and does this in a particularly unusual way, because here touching is expressly encouraged. The main focus is on trying, playing, experiencing and understanding. The journey takes you through the

different habitats that are characteristic of Vorarlberg: mountain, forest and water. In the final section of the museum, we go beyond the realms of possibility and in the truest sense of the word, go inside ourselves. inatura makes it possible to actually visit our bodies. Interactive and multimedia presentations demonstrate the exciting links between the life and interactive zones and provide an insight into the wonder of nature, people and their technical achievements. A fascinating experience. It is not surprising, therefore, that inatura is considered to be one of Europe's most modern natural history museums.

In addition to our permanent exhibits, in the gallery in the entrance area we offer our visitors regularly-changing, interesting special exhibits on varying topics. Come on in and take a look. A visit to inatura always has something new to offer.



Life and
Interactive zone
Nature

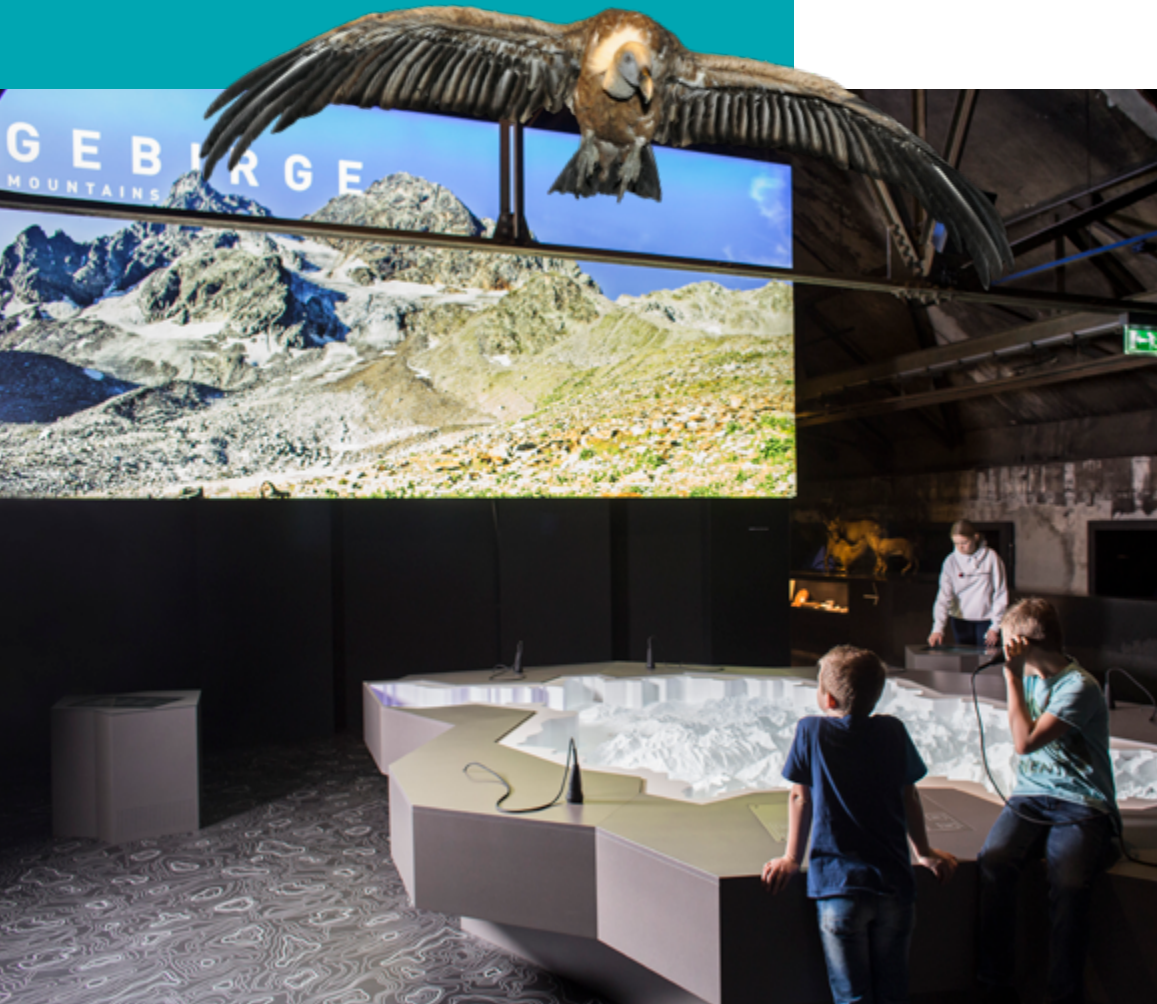
Our mountains

Vorarlberg is blessed with a unique alpine world. We have recreated this special habitat by building a mountain range out of steel, with different stations bringing different secrets from our region's mountain world closer to us. For example, there is a 360 degree projection of the descent of an avalanche that will give you goosebumps, impressive views from a bird's eye perspective, interactive games, a climbing wall, live small animals, a live feed from Damüls seismographic station and much more.

Life and
Interactive zone
Nature

Our forest

Have you ever stood face to face with a real pack of wolves? inatura makes this possible. You can even touch our wolves and other large specimens. Or get on all fours and explore a badger set with your family. Giant models of insects show you the most species-rich group of animals from a whole new perspective. There are also living bees and ants, which give us an insight into how these residents of the area's forests and meadows organize themselves.



Life and
Interactive zone
Nature

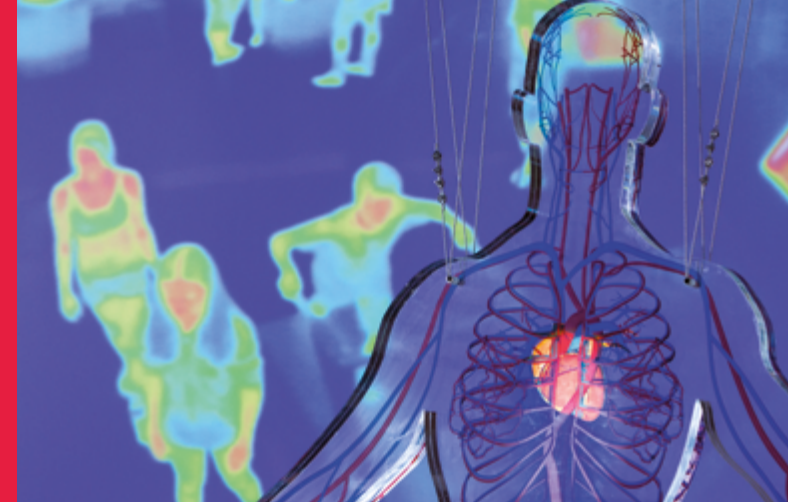


Our waters

Here you can dive into our region's rivers and lakes, without getting wet. A waterfall forms the entrance to this exciting interactive zone. Our underwater cinema takes you to the fascinating and unknown depths of Lake Constance. The "glass river" shows us, in an impressive way, the life that can be found in our flowing waters and a large aquarium shows us live examples of fish living in the Rhine and in Lake Constance. There are also specimens of local fish varieties, such as catfish and pike, that will astonish you.

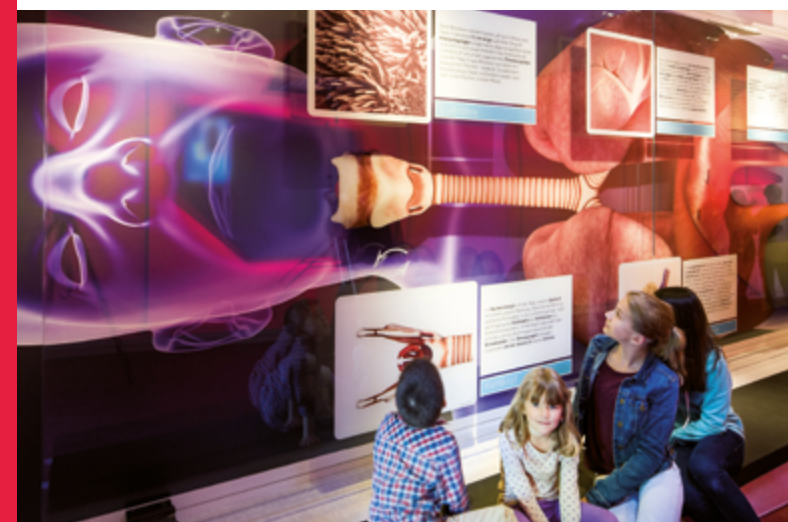


Interactive
zone
Humans



Our bodies

inatura's newest interactive zone was designed to be an integral part of the museum. For the first time, it is possible to travel through the human body as a whole, enabling you to discover its wonders. Whilst travelling the journey of your food, along the way you can discover, step-by-step, the functions and relationships within your body. The functioning of the different organ systems and the consequences of our actions can be grasped, in the truest sense of the word. An exciting journey to discover anew about our own health and about the wonder of humankind.



Interactive
zone
Humans



Our health

In the newest section of the museum, the wonder of life is described using humans as the illustration- with all of their fascinating elements. To make our visitors enthusiastic about life, we needed to bring the magic of life to them. And we have achieved it! Where can you have a look into the brain? Or understand blood circulation through play? Help the immune system in its hunt for intruders or help the digestive system in its work? Test the power of your own voice, understand your hormones, sharpen your senses or have a look into the inner workings of our smallest building blocks? The new exhibition section in inatura makes all of this possible, and much more too!



Interactive zone Technology

Nature and science are in direct relationship with each other. Therefore, along their journey through the interactive zones of the museum, our visitors will encounter several different "science zones". These use interesting experiments to shine light on different areas of classic science and technology, enabling children too to grasp the links between technology and nature in an exciting way.



Bionics

The aim of bionics is to use nature as a model for creating new types of products and technologies. What force helps keep aeroplanes up in the air? How was a plant a template for Velcro? What makes penguins such excellent swimmers? You will find the answers to all these questions and more at the Science Stations.



Mechanics

Mechanics form an integral part of all aspects of modern life. But do you know what laws they follow? Exciting exhibits allow visitors to explore what forces and principles lie behind gyroscopes, springs, gears and other mechanical mysteries.





Interactive zone Technology

Energy and water

This interactive zone focuses on everything to do with energy production and hydroelectric power. As part of this, you can find out, using your own body, how much energy is needed to power electrical devices. And how light, wind and water can be transformed into useable energy, for example in our solar aeroplane, which is powered entirely by light.

Optics

Do you know what kinds of shadows are cast by coloured light? Or how rays of light behave and why light can be directed and refracted? Our experiments bring light to the darkness and explain why it's sometimes hard to believe our own eyes.



Electricity and magnetism

Electricity and magnetism are two closely linked sciences. This is clearly demonstrated by some of our exhibits, through transformers, electric motors and a magnetic-forces game. Did you know, for example, that our hands can give off electricity like a battery, or that a strong electric charge can be created when you rub a plastic rod on wool? Here you can experience and understand this for yourself.

From industry to inatura

The buildings and halls that make up inatura stand on a remarkable site, because here, from 1827 to 1984, the Rüschi business made Vorarlberg industrial history. During the time of the monarchy, the engineering works and iron foundry were known for the construction and manufacture of hydroelectric installations. Later, they manufactured machine tools and cast parts. In the summer of 2003, the area became the new home of the “inatura” natural history museum. In building the museum, the historically valuable architectural details were skillfully integrated into the concept of the museum and its buildings.



A garden for playing, dreaming and lingering

Along with the interactive natural history museum, a town park was created at the heart of Dornbirn, a town once known as “the Garden town of Dornbirn”. Over an area of 20,000 m², a diverse park was created. Through clever planning and construction, old was successfully combined with new, coming together to create a harmonious whole.

Herb garden and fallow ground

In the Sleeping Beauty garden your attention will be drawn to the old trees, while the arboretum is a living collection of trees from all over the world. The four rows each represent a different continent and the trees found there. A particular gem of the park is the section of what is known as fallow ground. In line with what is typically present in fallow ground, there is a variety of wild herbs and medicinal plants. The idea for this area came after a herb garden was planted. The herb garden, together with the fallow ground, is a true experience for the senses and invites people to stop and look around.



Entrance hall

Shop, restaurant, information & more

In the entrance hall, you can find everything you need to make your stay at inatura complete:

* inatura Café-Restaurant

Refreshments, snacks and culinary specialities from Vorarlberg

* inatura museum shop

Special inatura products, books, natural history souvenirs and technical gadgets

* Cloakroom

Leave your clothes and valuables here for free

* Information

We will gladly answer any questions you have about inatura!

* Accessibility

inatura is planned in such a way that all exhibition areas are accessible to people with walking aids or wheelchairs. There are three disabled parking spaces close to the entrance. At the till, a wheelchair is available for use, free of charge. There are two disabled toilets.

HEARONYMUS - Your personal Museum AUDIOGUIDE

The free Hearonymus App turns your smartphone into a modern audio guide for the museum.

How it works:

1. Open Google Play Store or App Store and download "Hearonymus APP".
2. Search for the keyword "inatura Erlebnis Naturschau".
3. Choose your preferred guide and download it.
4. Now you find all Guides under Menu Item "My Guides".



HEARONYMUS



Google Play



App Store

Opening times

Open daily from 10:00 to 18:00

Closed on 1 January and 25 December

Schools can register from 8:30

Admission charges

Adults	€ 11,50
Children over six	€ 5,70
Senior citizens, young people, students etc.	€ 9,70

Family tickets:

1 adult + 1 child	€ 14,90
1 adult + 2 or more children	€ 17,30
2 adults + 1 child	€ 25,30
2 adults + 2 or more children	€ 26,40

Group offers available on request

Dornbirn Kunstraum

The inatura-ticket is also valid for entry to all exhibits in the Dornbirn Kunstraum, an art space in the neighbouring assembly hall.

Family bonus

Ask about the 'bonus card' at the inatura ticket desk

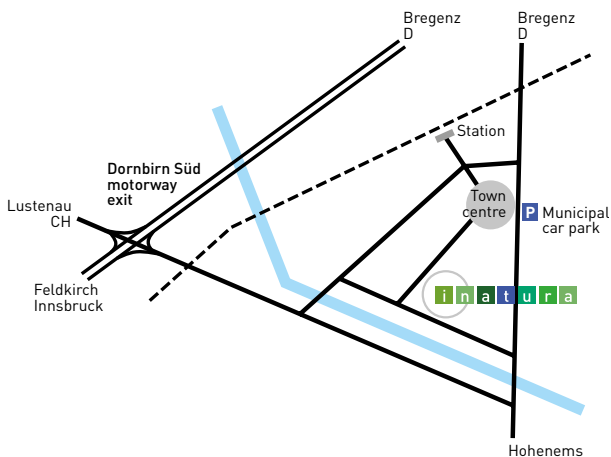
50% reduction for families from the second visit.

Valid for 1 year from date of issue.

A public car park is available next to inatura. and there is another large car park in the centre, just a few minutes on foot.



How to find us



inatura

Erlebnis Naturschau GmbH

Jahngasse 9, 6850 Dornbirn, Österreich

T +43 5572 23 235-0, F +43 5572 23 235-8

www.inatura.at

Wir danken unseren Partnern für die Unterstützung

